



Münchener Str. 4a
D-82131 Gauting
Tel. +49-89-8931043/45
E-Mail: contact@crst.de
Web: www.crst.de

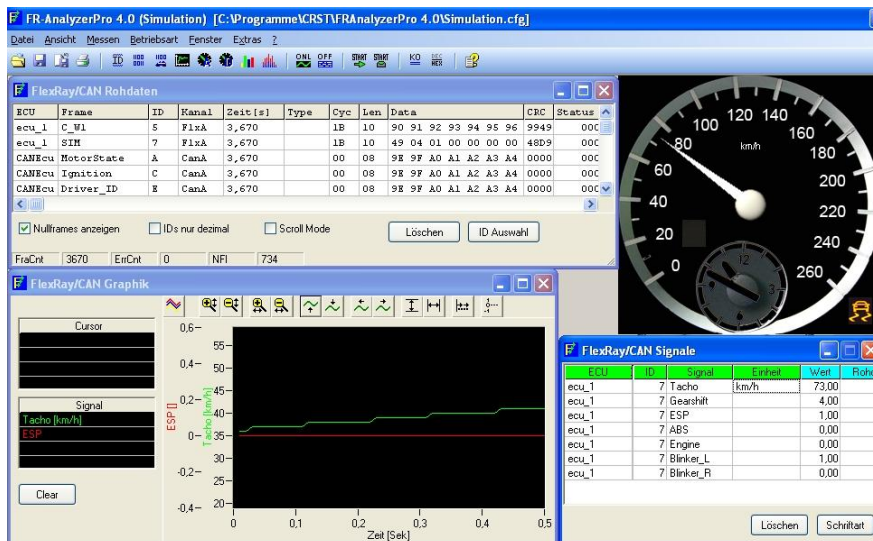
FR-AnalyzerPro 4.0 Datasheet

Overview

The FR-AnalyzerPro is a FlexRay™ and CAN monitoring software for analyzing the FlexRay and CAN bus traffic. It can be used in online and offline mode.

In online mode a PC running the FR-AnalyzerPro software is connected to the FlexRay and CAN bus via the Eberspaecher FlexCard® CycloneII/SE.

The offline mode allows the data previously captured on the PC to be analyzed and visualized far away of the real bus, e.g. in the office.



FR-AnalyzerPro Online

The following functions are available in online mode:

- Realtime display of FlexRay frames and CAN messages in decimal/hexadecimal form
- Physical display of car signals/units and signal elements
- Statistic display of car signals/units with min., max., average and standard deviation values
- Graphic y/t display of car signals/units
- FlexRay and CAN bus statistic (e.g. bus load, number of IDs occurred, ID cycle times, null frames)
- FlexRay and CAN ID preview of all active bus nodes
- Import of car data bases in FIBEX (Version 1.15, 1.2 und 2.01) and CANdbc format
- Trace of FlexRay data traffic into log files
- Transmission of FlexRay frames/patterns/signals with the FlexCard Cyclone II/SE
- Filter/Trigger for FlexRay and CAN frames/signals
- Supports Cyclone II/SE trigger output pins, monitoring modes (async, sync, mixed-mode etc.)

FR-AnalyzerPro 4.0 Datasheet

FR-AnalyzerPro Offline

The following functions are available in offline mode:

- Offline analysis of previously captured log files
- Identical display possibilities as in online mode
- Single step (forward, backward) and "Run" mode
- Data export into several file formats (Excel®, Matlab® o.ä.) with filtering particular IDs

FR-AnalyzerPro in general

- Windows™ "XP Style" GUI
- Each child window can be opened in multiple instances.
- Configurations can be saved into files (e.g. all open windows with signals and parameters)
- User definable VBA like scripts
- Dynamic language switching between English, German and other languages.
- Context based help functions (F1 Help)

FR-AnalyzerPro enhancements Version 4.0 against Version 3.5

- Supports CAN (in addition to FlexRay) measurements with the FlexCard Cyclone II/SE
- FlexRay- and CAN bus statistic
- FlexRay- and CAN ID preview
- New graphic functions (e.g. optional grid lines, new buttons)
- New graphic instruments configurable on panel base
- Search functionality for imported database

System preconditions

- Windows®-XP operating system
- PC with PC-Card Slot for FlexCard Cyclone II/SE

Availability

- The FR-AnalyzerPro 4.0 is available September 2008